

# Interchanges

## What should the interchanges look like?



The following exhibits explain design guidelines and show preliminary recommendations.

These are our ideas based on engineering and safety guidelines, and early feedback from local community leaders.

With your input, these ideas will be refined.



# ACCESS MANAGEMENT

The Improve I-70 studies will consider how to improve traffic flow and overall safety by applying access management measures at all interchanges.

Access management is a careful planning process that looks at;

- the design and location of interchanges,
- the location of nearby frontage roads, cross-streets and driveways, and
- the potential for traffic conflicts – places where vehicles may cross paths.

Many measures can be taken to apply access management at interchanges. Deciding what measures to use is a process that involves you.

Improve I-70 team members are in the beginning stages of determining how to improve interchanges while applying MoDOT's access management guidelines. Your experiences with traffic in the area are important and could be informative to study team members.

Please view the video located here to learn more about access management. Then share your thoughts and opinions with a member of the Improve I-70 team.



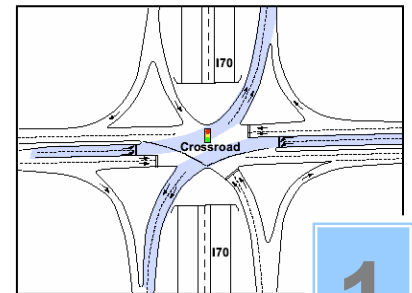


# Single Point Urban Interchange

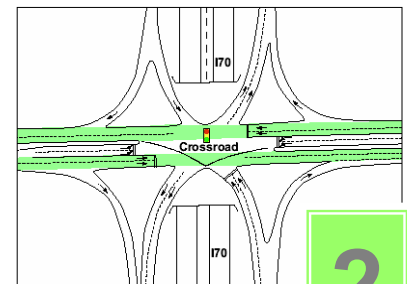
Interchanges in crowded urban areas must often move more and more traffic in the same amount of space. Single Point Urban Interchanges can help move traffic more efficiently.

The Single Point (or an X-Interchange or an Urban Diamond) moves traffic on, off and across (or under) the highway through a common intersection with a traffic signal.

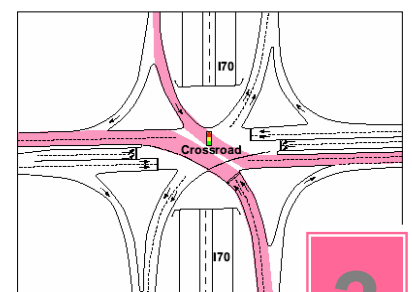
While Single Point Interchanges are usually more expensive to build than traditional interchanges, the design moves more traffic through a smaller amount of space. In many cases they can be built within existing state property. This can be an important advantage in crowded areas.



Left turns onto I-70



Through traffic



Left turns off of I-70

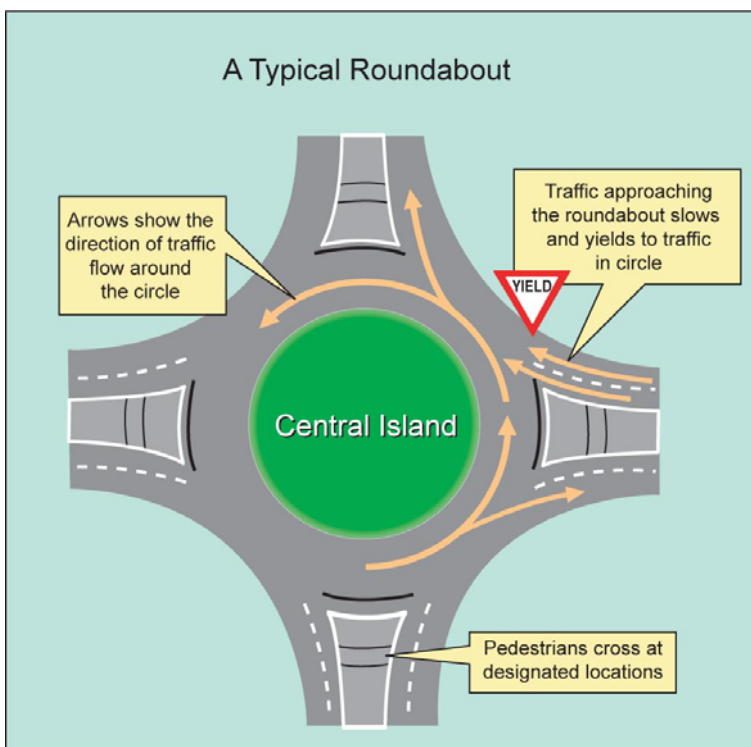


# Roundabouts

Roundabouts can move large amounts of traffic more quickly, safely and efficiently.

Roundabouts:

- have only 8 points where vehicles could collide – traditional intersections have 22 points;
- move traffic more quickly, saving time and fuel while reducing air pollution; and
- can save about \$5,000 a year because they don't need traffic signals.



For I-70, roundabouts could be used at **intersections** near interchanges.