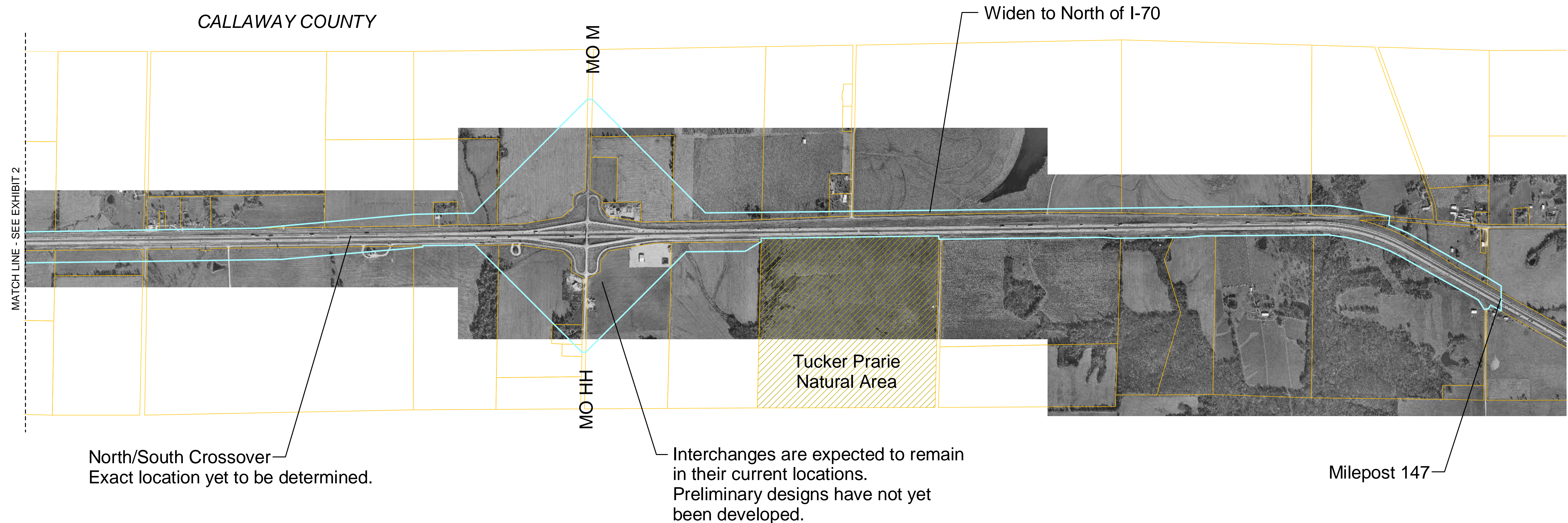


Index

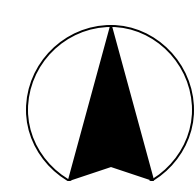


Section 5 Proposed Widening Location

This board shows the general area where I-70 improvements will be located. More specific improvements within this area will be developed in the coming months and will be available at public events held later this year.



SECTION
5
Milepost 134
to
Milepost 147



Scale: 1" = 700'

LEGEND

- Property Lines
- Interchange

- Proposed Study Area
General Area in which I-70 improvements could be located. A more specific alignment will be developed later in the study.

SIU 5
Proposed Widening Location

EXHIBIT
3